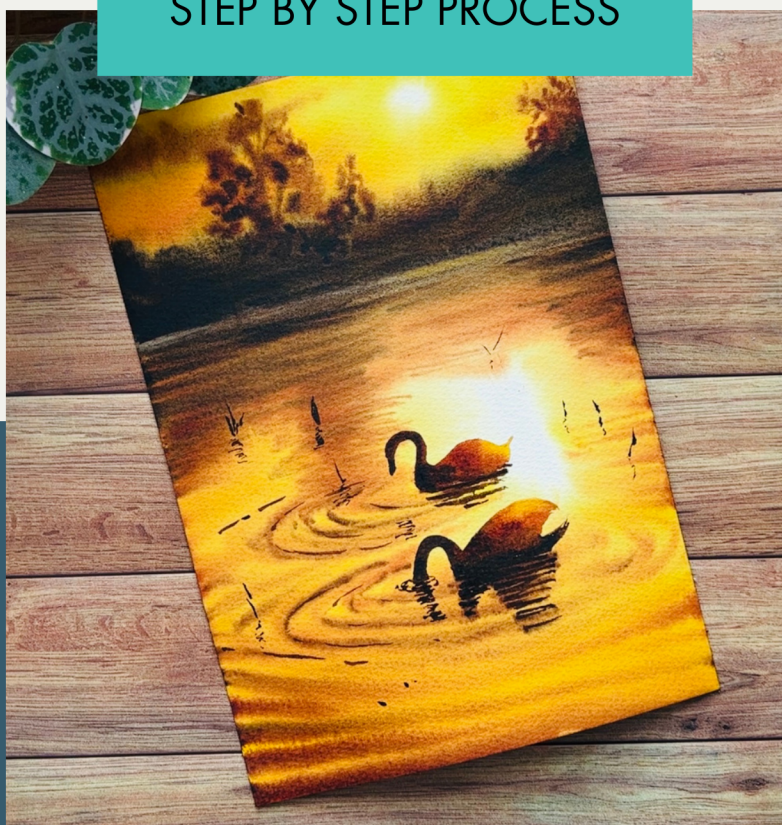


LEARN WATERCOLOR PAINTING

# SWAN IN LAKE

STEP BY STEP PROCESS



GEETHU CHANDRAMOHAN



Hello, I'm Geethu. I am Geethu, an aerospace engineer by profession, a watercolour and mixed media artist on the side. I live and work in the UK with my husband and son. Art and painting relaxes me and keeps me going everyday. It is like therapy to my mind, soul and heart.

I started painting with watercolours when I was a child. I learnt by experimenting and by trying out on my own.

I have invested a lot into learning more and more about painting because I believe that art is something which can create endless possibilities for you and give you a different attitude towards everything you see forever.

My hardworking and passion for painting has opened a new world of possibilities for me including being selected as Ambassadors for Silver Brush Ltd, Sitaram Stationers and White Nights Watercolours.

A portrait of Geethu, a woman with long dark hair, smiling. She is wearing a black top with a vibrant pink and blue floral pattern. The background is softly blurred, showing indoor plants and a blue curtain. The text 'THE BEAUTY OF' is faintly visible behind her. At the bottom, the words 'COLOURFUL MYSTIQUE' and 'GEETHU' are prominently displayed in a stylized font.

THE BEAUTY OF

COLOURFUL MYSTIQUE

GEETHU



# MATERIALS YOU NEED

Watercolor Paper: Ideally  
100% cotton, 300gsm cold  
pressed paper

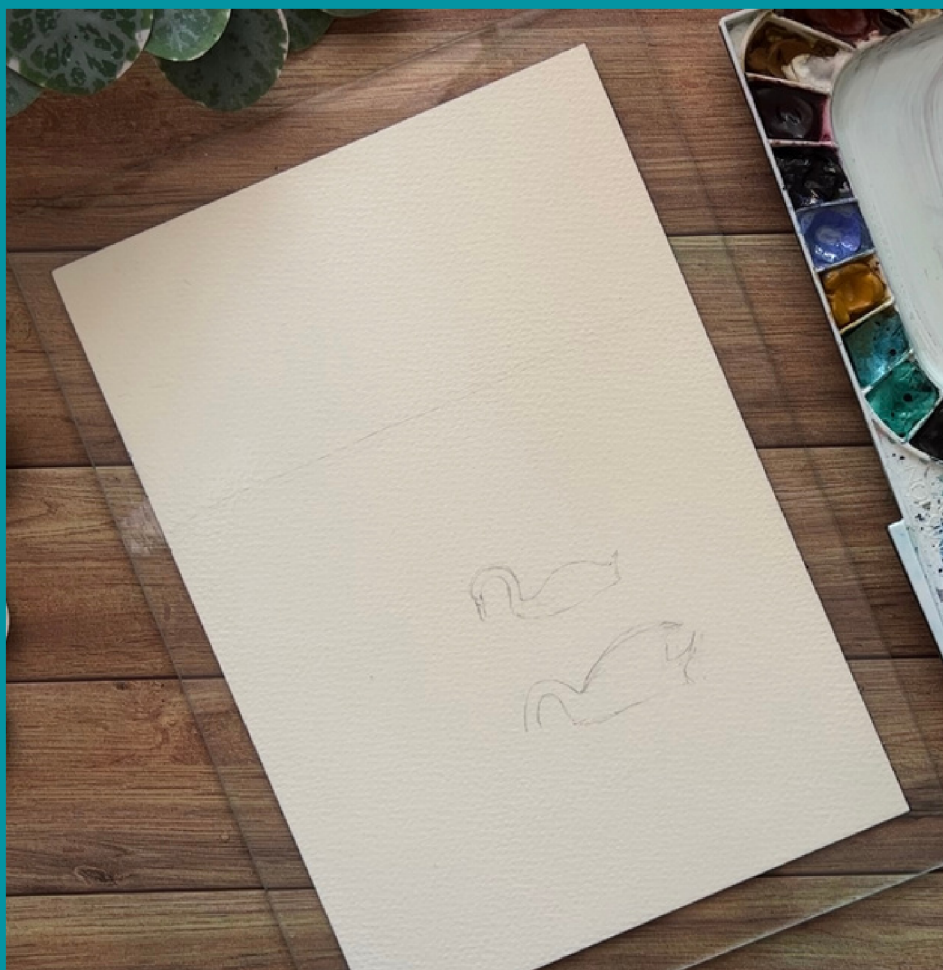
Watercolor Paints:  
Transparent Yellow,  
Quinacridone Gold,  
Transparent Brown/Burnt  
Umber, Payne's Grey

Watercolor Brushes: Round  
Size 8 for larger strokes, Size  
0-4 for details

Painting using the two side  
water application method,  
hence recommended to have  
a non absorbent surface  
such as glass or acrylic  
board to stick the paper on.

Alternatively can also be  
painted using taping  
method.





## Step 1

Sketch out the most basic shapes and as much as you need for visibility. I have only sketched the horizon line and the shape of the swan. You could additionally sketch the outlines of the foliage at the horizon and the ripples too.





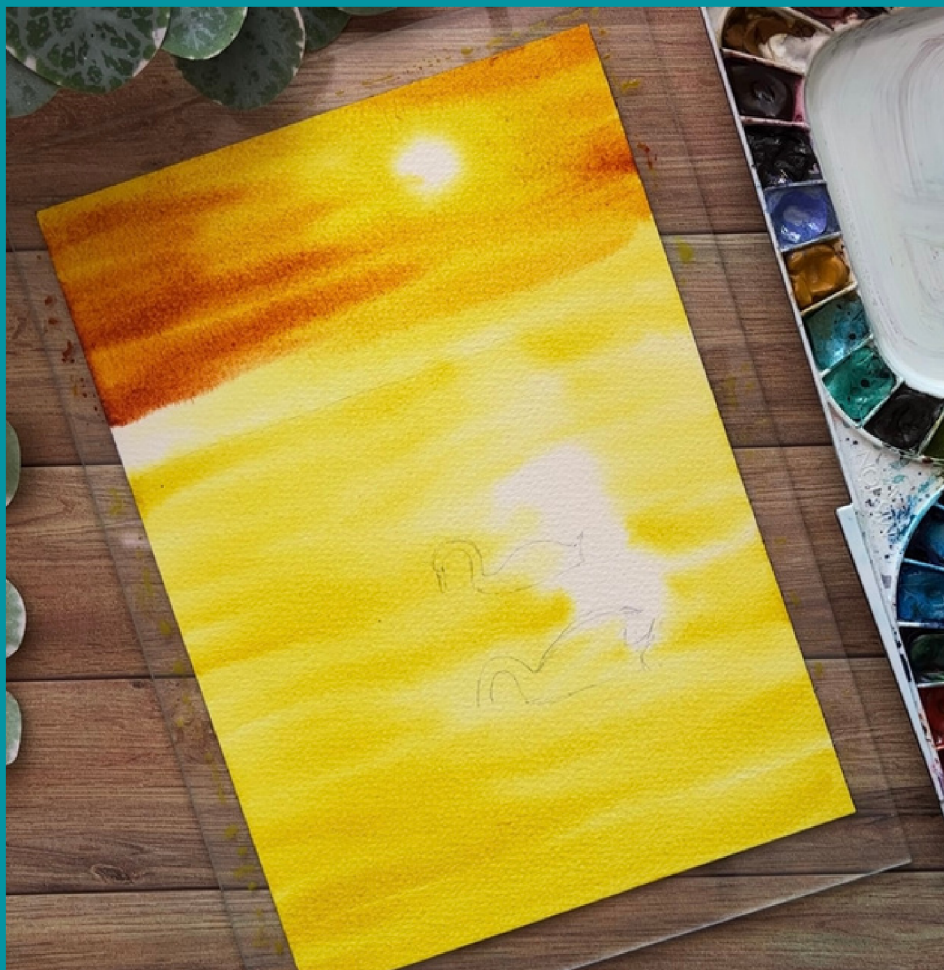
## Step 2:

Apply water on both sides of the paper and make sure to stick the paper onto a non absorbent surface such as an acrylic board. Make sure there are no large pools of water on the surface of the paper. Start with a transparent yellow and add in the sunset areas randomly as you wish and add in reflection of the sunset areas into the water. Leave a large round empty space for the sun and the same white space in the water for its reflection vertically downwards.

## Pro Tip:

Use a creamy consistency of paint to ensure that the paint does not bleed too much on the wet surface. While painting around the sun area, if it starts to spread, use the lifting technique to lift off paint from the circular region.





## Step 3

Add in a quinacridone gold yellow colour over the top to create additional dark sunset colours in the sky. Blend it over the yellow to create some beautiful effects. Use a medium size brush with horizontal strokes.





## Step 4

Using a dark colour such as sepia or transparent brown mixed with Payne's grey add in the darker background. Keep in mind that the paper is still wet at this point and should remain wet until you leave it to dry because we're using the two side water application method. You'll get a softer edge for the background due to the moisture on the paper.





## Step 5

Using the same golden colour used before, add in the reflections in the water. Use horizontal lines to depict the reflections in the water. Remember to keep the sun area lighter.





## Step 6:

Add in more ripples and waves into the water using the golden and brown colours at random. Around the area where the swan is add in ripples in the water.

## Pro Tip:

Make sure to have the waves in the water be thicker towards the bottom and thinner lines towards the top to implement perspective in your painting. Add the ripples in small oval shapes one closer to the other, to get the ideal ripple effect in water.





## Step 7:

Add in the silhouette of some trees and bushes in the background onto the wet surface. Using a mixture of golden yellow and brown together. This could be added right after step 4 too.

## Pro Tip:

After step 4, my paper was a little too wet, thus I painted the other areas and came back to add in the foliage at step 7. Always keep an eye on your paper and the amount of moisture on it. If you see that it's too wet at an area, then get back to that region later. If an area is starting to dry add in more strokes and colour to give back the moisture to the paper on that region.

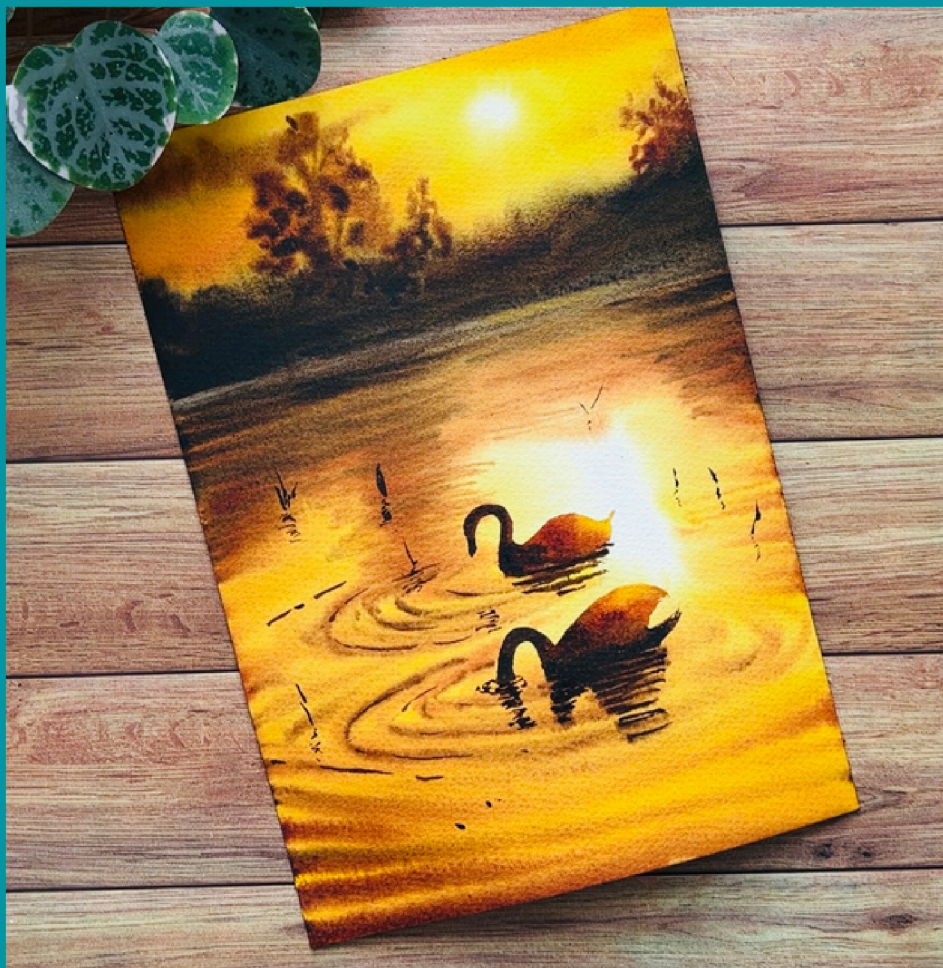




## Step 8

Now let the paper dry completely. You can use a heat gun to speed up the drying process. add in the swan using a blend of the golden yellow, brown and Payne's Gray. Keep the area of the swan facing the sun lighter and darker as you go away from the sun region. This way you'll be able to depict the tonal values correctly. Also add in the reflections. If you want a softer reflection, it can be added before the drying process right after step 7.





## Final

Finish off with some dark lines at random places, some twigs and its reflections.